

*The St. Lawrence County Historical Association*

# *QUARTERLY*

---

*Volume XLVI - Number 1 - Winter 2001*

---



## The St. Lawrence County Historical Association at the Silas Wright House

The St. Lawrence County Historical Association is a private, not-for-profit, membership organization based at the Silas Wright House in Canton, New York. Founded in 1947, the Association is governed by a constitution, by-laws, and Board of Trustees. The Historical Association's membership meets annually to elect its trustees.

### *2002 Officers:*

President: Carl Stickney, Norwood  
Vice-President: Jane Subramanian, Potsdam  
Treasurer: Carol Johnson, Canton  
Secretary: Susie Wood, Hammond

### *2002 Staff:*

Trent Fullock, *Executive Director*  
Sue Longshore, *Collections Manager*  
Mary Ellen Jones, *Archives Manager*  
Beverly Brownell, *Administrative Assistant*

### *2002 Trustees:*

Chris Angus, Canton  
Patricia Carson, Canton  
Richard Foster, Rossie  
R. Shawn Gray, Massena  
Gary Kelly, Potsdam  
E. Jane Layo, Waddington  
Stan Maine, Pierrepont  
Lowell McAllister, Heuvelton  
Todd Moe, Norwood  
Cathleen O'Horo, Canton  
Tim Strong, Potsdam  
J. Rebecca Thompson, Hannawa Falls  
Peter Van de Water, Canton

### **Our Mission**

The St. Lawrence County Historical Association is a not-for-profit membership organization and museum which serves as an educational resource for the use and benefit of the citizens of St. Lawrence County and others interested in the County's history and traditions. The Association collects and preserves archival material and artifacts pertinent to the County's history. In cooperation and collaboration with other local organizations, the Association promotes an understanding of and appreciation for the County's rich history through publications, exhibits, and programs. The St. Lawrence County Historical Association operates within museum standards established by the American Association of Museums.

### **SLCHA Membership**

Membership in the St. Lawrence County Historical Association is open to all interested parties. Annual membership dues are: Individual, \$25; Senior/Student, \$20; Family, \$35; Contributor, \$50; Supporter, \$100; Patron, \$250; Businesses, \$50 to \$1,000. Members receive the *SLCHA Quarterly*, the Historical Association's bi-monthly newsletter, and various discounts on publications, programs and events.

St. Lawrence County Historical Association  
at the Silas Wright House  
3 East Main Street, PO Box 8  
Canton, New York 13617  
(315) 386-8133  
fax (315) 386-8134  
e-mail: [slcha@northnet.org](mailto:slcha@northnet.org)  
[www.slcha.org](http://www.slcha.org)

Published continuously since 1956

*The Quarterly* is endowed in memory of Albert Priest Newell and Ella Waterman Newell.

Publication of *The Quarterly* is also made possible with public funds from the New York State Council on the Arts, a State agency.



*Managing Editor:*  
**Pamela Ouimet**

*Production Editor:*  
**Susan L. Dresye**

*Advisory Board:*  
**Chris Angus, Canton**  
**Arthur Johnson, Potsdam**  
**Herb Judd, Canton**  
**Mary Ruth Judd, Canton**

*Copyright ©2001 by the  
St. Lawrence County Historical  
Association. All rights reserved.*

Except for brief excerpts, no part of this publication may be copied or reproduced without the express written permission of the author and the Historical Association. The St. Lawrence County Historical Association is not responsible for the statements, interpretations, and opinions of contributors to *The SLCHA Quarterly*.

*The SLCHA Quarterly* is published Winter, Spring, Summer, and Fall each year by the St. Lawrence County Historical Association for its members and friends.

Additional copies may be obtained from the St. Lawrence County Historical Association, P.O. Box 8, Canton, NY 13617 at \$4.00 each (\$2.00 for members), plus \$1.00 for postage.

**Contributions:**

*The SLCHA Quarterly* welcomes contributions. To submit a manuscript, or for further information, please contact the editor through the St. Lawrence County Historical Association. Please address communications to: Managing Editor, *The SLCHA Quarterly*, P.O. Box 8, Canton, NY 13617.

*The St. Lawrence County Historical Association*  
**Quarterly**

Volume XLVI - Number 1 - 2001  
ISSN: 0558-1931

**CONTENTS**

<b>Lavair's Garage and Hall</b>	<b>3</b>
<i>By Ruth Augusta Butler Johnstone</i>	
<b>Barns located in the Town of Parishville</b>	<b>6</b>
<i>By Emma Remington</i>	

**Issue Editor:**  
Pamela Ouimet

**Cover Illustration**

This farm is owned by Joe York, Ashton Road, Parishville. This was once owned and operated by William Ashton, then passed down to his sons, Delmar and Robert Ashton. There is no activity today.

*Courtesy of Emma Remington*

# LaVair's Garage and Hall: Home of the Historic Stage Curtain

By Ruth Augusta Butler Johnstone



*The Stage Curtain.*

## Preface

The author acknowledges with grateful appreciation the use of the recollections of Miss Georgena McKane, who was born July 24, 1902 in Helena.

Her remarkably agile mind recalls many facts, which are not found in written documentation. Wherever possible, the author has tried to document the events described herein. If anyone has a different accurate knowledge of any fact, please contact the author.

## Lavair's Garage and Hall

The building known as Lavair's garage is one of the oldest struc-

tures in Helena. An imposing edifice of two stories, it was for over a century the first building seen as one entered the village from the iron bridge. (Unfortunately, the bridge was closed in 1996.) For the majority of years of the twentieth century, the garage was owned and operated by the Lavair family. But let us trace as best we can the history of that building, and how its second story became a center of town gatherings and social life.

Due to the absence of complete and accurate county records, the earliest documented date in reference to the ownership of the structure is 1875, when it was purchased

from William Mears by Augusta Fletcher, wife of Calvin T. Fletcher. Mr. Fletcher had gone into the mercantile business with his brother-in-law, William Hamlin in 1871, according to Hamlin. The Fletcher family lived in the rear portion of the building where all three of Calvin and Augusta's children, Laura, Clark, and Charles, were born.

About 1880, the family moved to a large house up the street (now Johnstone), across from the home built by Hamlin for his family (now Lucia). This partnership continued until 1881, when Hamlin left and opened his own general store across the corner. It is said that

there was a great rivalry between the two men, both in business and housing, each competing to out-do the other. Fletcher then operated the business, specializing in butter and dairy products until his death in 1906, as well as serving two terms as supervisor of the Town of Brasher. In his obituary appearing in the Massena newspaper, it was noted that although Calvin Fletcher had been admitted to the bar in 1864 and had practiced law for a few years, he displayed an acumen for mercantile enterprises, and was widely known throughout the county both personally and as a judge of dairy products. His rival, William Hamlin, wrote his obituary in most glowing terms.

Unfortunately, there is a void in documented dates at this point, so some educated assumptions must be made. It is thought that the son of Calvin Fletcher, Clark Fletcher, operated the general store for a few

years, with, perhaps, his brother Charles. We have only the recollections of Miss Georgena McKane, who was born in 1902, to fill this gap. A 1912 Helena school photograph names Clark Fletcher's son Elmer, age 8, as a student, indicating that his father was still living in Helena, and most likely operating the store. Clark later moved his family to Schenectady. Clark Fletcher was this author's uncle.

At some point, Charles and his cousin, John Hamlin (who had gone into business with his father William), bought the building and expanded their talents to include the installation of a hardwood floor and a stage in the upstairs of the building, thus creating a most spacious and convenient hall for entertainments. They rented this out to traveling shows and other organizers of dances and social events. Food competitions and popularity con-

tests were also held frequently. Miss McKane recalls that this hall was used on a weekly basis by various groups for dances and entertainments.

It is believed the theatre curtain was painted in 1914 by F. Degre, a local sign painter. At the same time the front curtain was painted, various side curtains were designed, one showing the 1914 date. About this time the partnership of Robideau and Lavair had begun as proprietors of the Helena garage. Their advertisements appear on the curtain, as well as many other Helena businesses of the day. (A list of those advertisements can be found at the end of this article.)

Perhaps Ed Robideau and George Lavair began their proprietorship of the garage by renting the downstairs portion for a time, until purchasing the building from John Hamlin and Charles Fletcher in 1920. Thus began the Lavair tenure, which lasted the rest of the century. Robideau and Lavair sold Willys-Knight and Overland automobiles, as well as tires, gasoline, auto parts, and specializing in the repair of cars. Behind the building, there was a sawmill that was operated by George and his brother, Earl Lavair. Eventually Robideau left the business while George Lavair and his son, Herbert, continued on.

As other entertainments replaced shows and dances, Lavair's Hall was used for Roman Catholic Mass and religious instructions, and later as a polling place. It also housed a mid-century style jukebox used at the famous Hogansburg Bar-B-Ques. In the 1940s, the local teenagers liked to dance to these tunes in this hall. Fortunately, the interior architecture of the hall is remarkably well presented to this day in 2001, and is admired by all



*The garage, ca. 1931.  
George Lavair, [Ed?] Robideau.*

who are privileged to see it. For a time the front room of the garage became a gathering place for men who played cards, argued about politics, and discussed the news of the day. My late husband, Walter Johnstone, was one of those men, and often told of many practical jokes played upon each other, and the good times had by those who gathered there.

Following the death of his father George Lavair on June 19, 1958, Herbert Lavair and his wife, Doris, acquired the property and were the proprietors of Lavair's garage until they retired. Herbert, who was affectionately always referred to as Herby, had a great interest in early radio, and later also sold television sets when they first became usable in this area. He leaves a large collection of radios and vacuum radio tubes. Mrs. Lavair operated the business while Herby was gone each day on his St. Lawrence Central bus runs, and later when he worked in that school's garage. One of Herby's assets was a Bear balancing machine, which was unique to this area in earlier days. He had a knack for repairing cars, and could be seen late into the evening dressed in one of his ever-present green work-suits, bent over an engine or poring over news magazines.

Both Doris and Herbert Lavair passed away within months of each other after lengthy illnesses in the fall of 2000. Their daughter Judy Lavair Cushman is the present owner of the garage, and on June 30, 2001 generously donated the marvelous historic stage curtain to the Town of Brasher Museum. It was carefully removed from the stage where it had hung for almost 90 years, rolled on its pole, taken out a window and down a ladder, and then carried across the old iron bridge to the Museum. It now



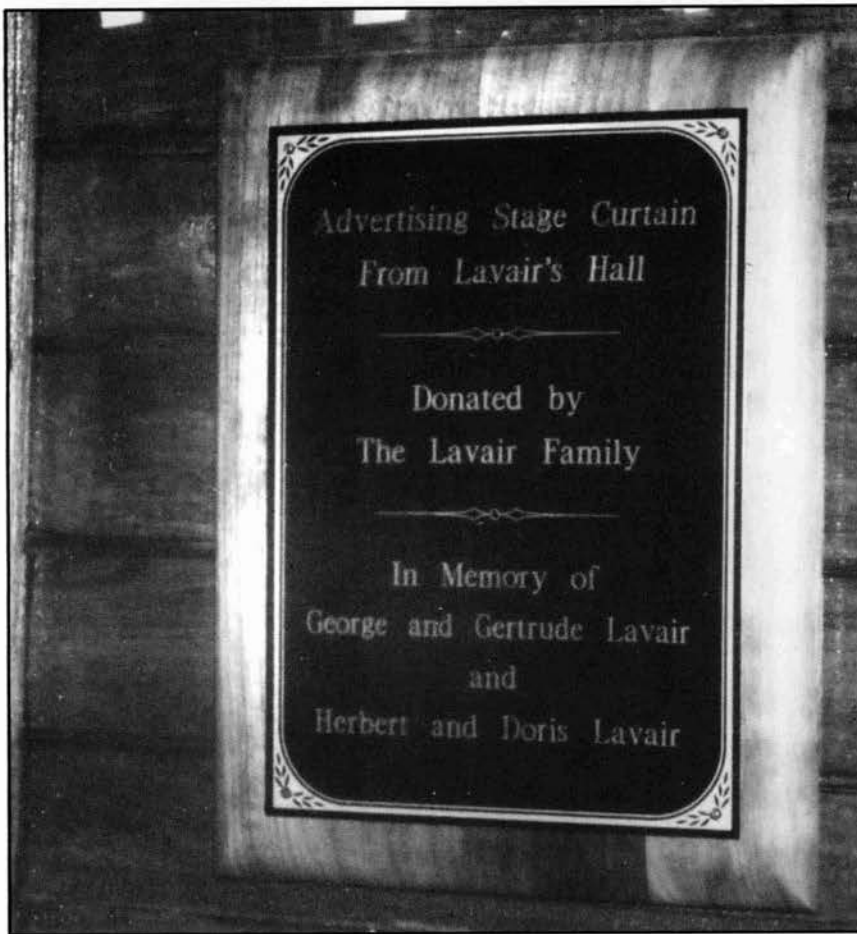
?, Don McKane and George Lavair

hangs for all to view on the back wall of the Museum. The Helena Historical Society is most grateful for this gift. A ceremony to dedi-

cate the curtain in memory of the Lavair family will be held on Old Home Sunday in August, 2001.



Judy Lavair Cushman presents Town Supervisor James Dawson with the Stage Curtain at the Helena Museum, Town of Brasher.



Stage Curtain Dedication Plaque.

Prashaw, J. N.  
Groceries, Dry Goods, Shoes, and  
Clothing, Helena

Robideau and Lavair  
Helena Garage

Shean, M. M. (Maurice)  
The New Helena House Bar and  
Livery, Helena

Tryon, B. S. (Bertram)  
House Painter and Decorator,  
Helena

**Bibliography:**

Northern Abstract Corporation. *Abstract of Title #24672, December 16, 1955: Charles F. Fletcher, Dora V. Fletcher, his wife, John L. Hamlin to Edward F. Robideau, George G. Lavair, Dated August 30, 1920.* Canton, NY: St. Lawrence County Clerk's Office.

*Calvin T. Fletcher Obituary, Vol. XV, no. 18. Massena, NY: The Massena Observer, March 22, 1906.*

Personal recollections of Helena residents Ruth Johnstone, born 1920, and Georgena McKane, born 1902.

**Stage Curtain Advertisements, circa 1914**

**—Listed by Proprietors:**

Blanchard, L. (Leon)  
Hotel and Livery, Helena

Crowley, John R.  
Dealer in Everything, Helena

Degree, F. (Formosa)  
Signs [possibly in Brasher Falls]

Hamlin, John L.  
Insurance Broker, Helena

Hamlin, W. A. (William)  
General Merchandise, Helena

Hawley and McCarthy  
Pianos, Massena

Hill, W. C.  
Pump Manufacturer, Brasher Falls

Labarge, L. (Levi)  
American House Hotel and Auto  
Livery, Helena

Lantry Brothers, B.F. (Barney) and  
J.C. (James)  
Dealers in Livestock, Hay, and  
Straw, Helena

Nowland, W. A. (William)  
General Merchandise and Ice  
Cream Parlor, Helena

## Barns Located in the Town of Parishville

Compiled by  
Emma Remington,  
Parishville Town Historian



*This barn is owned by Jeffrey Mitchell, Allen Falls Road. It was once owned by John and Betsey Tichenor. Then Fern and Blanche Trerise owned and operated the farm. Several people have owned it since the Trerise family, but no one has operated or worked the farm.*



*This barn is owned by Darell Thompson, Allen Falls Road. It was once the Lockwood Farm; later Percy Hart and wife owned and operated it. Floyd Remington Jr. and also Albert Groebler owned it. Darell did operate the farm, but it is no longer in operation. Some of the barn is now gone.*





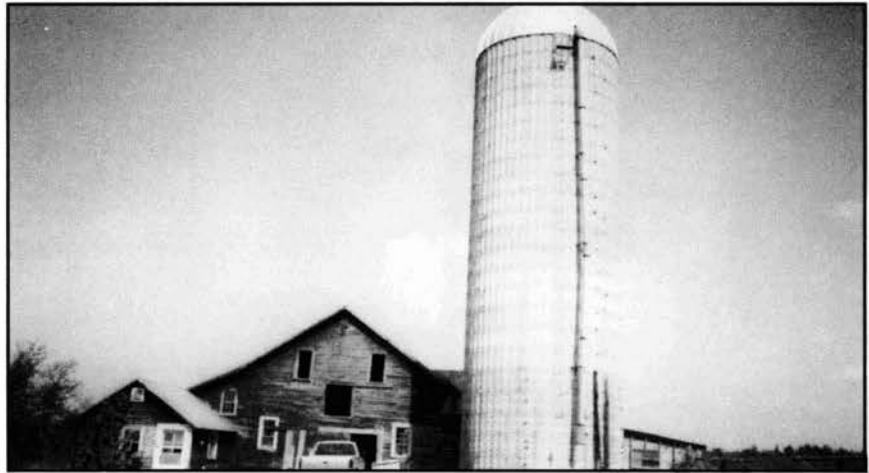
*This barn is owned by Marion Cameron, Benson Road. They once had a small farm with cows and horses; now there is no activity.*

*This barn is owned by Charles Cameron, Benson Road. It was once part of a small dairy farm, but now there is no activity.*



*This barn is owned by Reese and Henry Basham, Benson Road. The farm was formerly owned by Richard and Eldora Benson, who have both passed away. The cowbarn now sits unattended.*

*This farm is owned by Thomas Davis, Capell Road. This was the original Cutting Farm. Rhodes Davis owned and operated it for years and then his son, Thomas, took it over. He and his sons operated it for several years more, but he recently sold all the cattle, and lets the land out to another farmer. Thomas Davis is now retired.*



*This farm is owned by Thomas Davis, Capell Road. The original barns are all gone but Thomas's son, Jon, who lives in the house, has built a small barn.*

*This barn is owned by Rebecca Smith, Catherinesville Road. It was moved from the H. Stark Farm to this spot, then owned by Oswald Smith. He kept a few cows but the barn has not been used in years. Mr. Smith passed away and his wife moved into the hamlet; the farm is currently owned by their daughter.*





*This barn is owned by Timothy Baxter, Chapel Hill Road. It was built, by him, as a horse barn several years ago. It is still in use.*

*This barn is owned by Timothy Zellweger, Chapel Hill Road. Built by Orlando Thomas, then passed down through the generations, the last living relatives there were Harold and Mae Herriman. The barn is very old, but still used for horses.*



*This barn is owned by Stanley Wilson, Chapel Hill Road. The barn was built by Kenneth Wilson and was used for a small number of cattle. It is not in use at this time.*

*This barn is owned by John Reed and Becky Farr, County Route 47. It was built recently for their horses.*



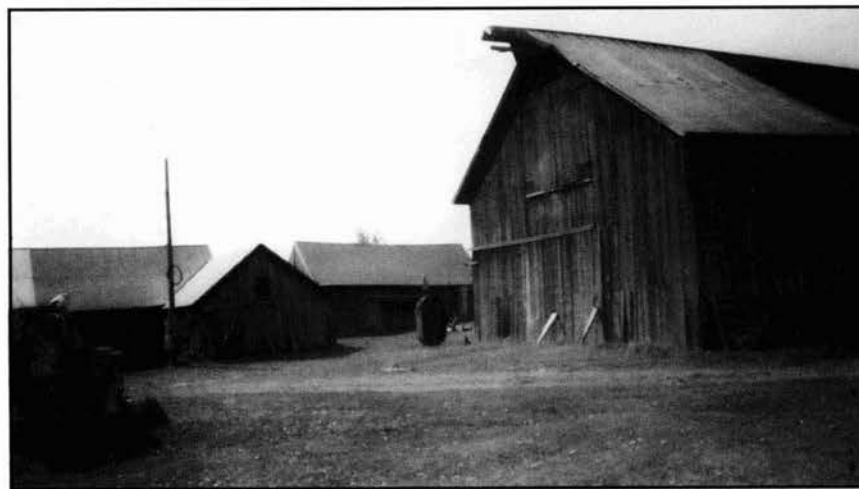
*This barn is owned by Irene Rosenbarker, County Route 47. The farm was operated by Richard Trerise, later combined with the Tom Stone Farm, which was owned later by William Fletcher. His son Frederick took it over, and it is now owned by his daughter, Irene Fletcher Rosenbarker. The barn is now vacant.*

*This barn is owned by Floyd Clark, County Route 47. In 1865, C. Stone owned the farm. Later it was owned by a Hayden, then the Garlough family for about three generations. James Garlough sold it to Mr. Clark. He recently had an auction and sold the herd of cows plus farm machinery.*





*Two views of a barn owned by Irene Fletcher Rosenbarker, County Route 47. Originally the Tom Stone Farm, it was owned by William Fletcher, then Frederick Fletcher and on to Irene Fletcher Rosenbarker. The barns are not in use.*



*This barn is owned by Steven Wilson, County Route 47. Once owned by a Tupper, it has been in the Wilson family for three generations: first Leslie Wilson, then Harold and now his son. The barn was built in 1900. Some of the barn has already been torn down. It has not been in use for several years.*



*This barn is owned by Robert Hall, Jr., County Route 47. He built the barn in 1997. It houses a cow and some goats.*



*This barn is owned by Jerry Davis, County Route 47. The farm was first occupied by George Flower, later John Sampier, and then Lewis Planty. Jerry built all new barns in the 1970s. He recently had an auction and sold all his cows.*

*This barn is owned by Beulah Hall, County Route 56. This barn was built in the last few years as a horse barn. She still has a horse and also a goat.*





*This barn is owned by Lamar and Katie Martin, County Route 56. This barn is not very old. It was built by Mr. Martin for a herd of cattle.*



*This barn is owned by Neil Richards, County Route 56. First, it was the Priest Farm. It has been in the Richards family for several generations, but is no longer in operation.*



*This barn is owned by William Robbins, County Route 56. This farm was always in the Stone family until a few years ago. Mr. Robbins has a few cows, and built this new barn in 2000.*

*This barn is owned by Brian LaPointe, County Route 56. The first owners were the Brownell family. They were among the first settlers of Parishville. Fred Durant lived there and operated the farm until he retired. It is vacant now and probably will never be operated again.*



*These barns are owned by Burton Chevier, Jr., County Route 56. This was the Parker Rose Farm, and it has been handed down through generations. Loren Barton, Jr. was the last. It was then sold outside the family, to Mr. Chevier, who with his family raises beef cattle.*

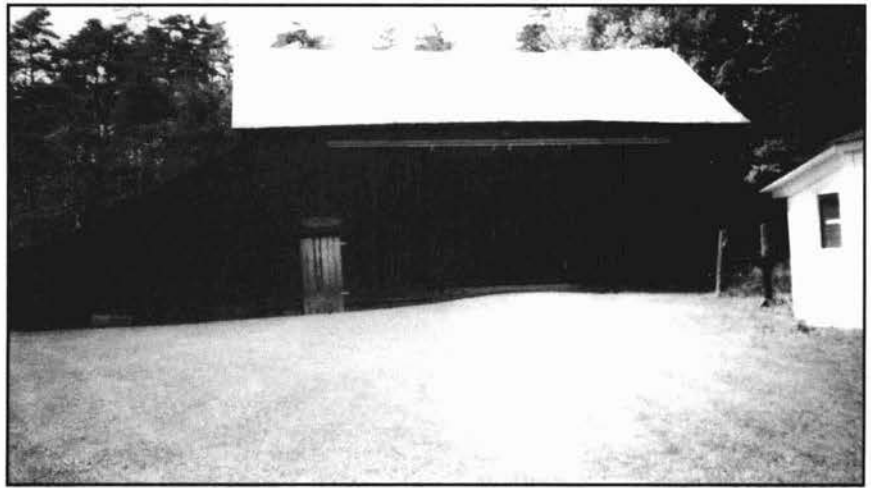






*This barn is owned by Raymond Waite, County Route 58. During the 1990s, Raymond tore the old barn down and built this new barn. It is still in use.*

*This barn is owned by Judy Arajs, County Route 58. Originally, it was the A. Bump Farm and passed through many families (once owned by Frank Hinman). The barn has not been used for many years.*



*This barn is owned by Raymond McGee, French Hill Road. Formerly the Lavine Farm, it was later owned by John Sullivan. Sometime in the 1940s, this barn was used as a sheep barn. It is now vacant.*



*These barns are owned by Bernard and Debra Stone Regan, County Route 58. The first owner was Justin Long, then his son, Ransom Long. It has been in the Stone family for at least three generations: Nelson, Daniel and now his daughter and her husband. The barns are no longer in use.*



*This barn is owned by Luke and Rachel Martin, Newton Road. The farm was earlier owned by Edmund Rabideau, who operated it with cattle and horses. It is currently being operated by the Martin family.*





*This barn is owned by Phillip and Barbara Remington, Newton Road. The barn was built by Phillip's father, Floyd Remington, Jr. He had a few cattle, but Phillip does not have any.*



*This barn is owned by James Richards, Newton Road. The cattle have been sold, and the farm is no longer in operation.*



*This barn is owned by John and Frances Skully, Old Dugway Road. It was recently built, but is not in current use.*

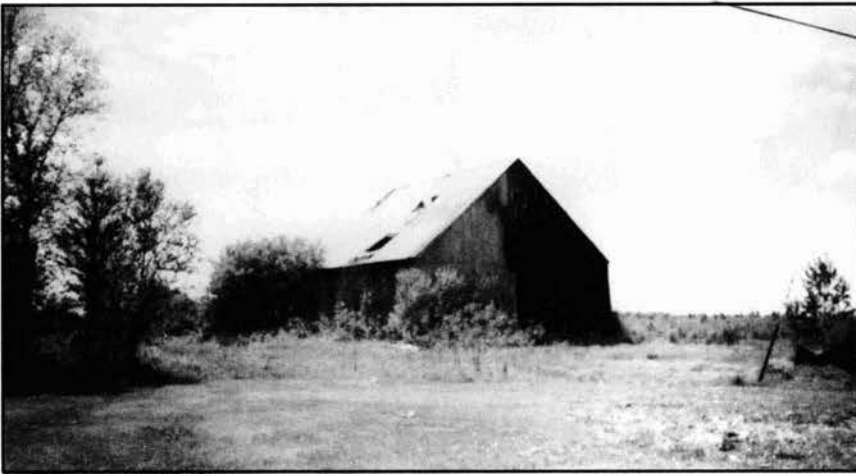
*This barn is owned by Roberta Culver, Old Potsdam-Parishville Road. It was formerly the home of Ezra Herriman. William Coon lived there and had a few cows. There has been no farming activity for several years.*



*This barn is owned by Henry and Henrietta Winters, Old Potsdam-Parishville Road. This was once owned by a Bosworth family; later by the daughter and her husband, Roaina and Pitt Tupper. Henry and Lottie Tyo owned it later and brought up a large family on the farm. Now his daughter, Henrietta, and her husband own it. Henry Tyo used to farm, with cattle and horses, but the barn has not been used for years.*

*These barns are owned by Francis Conrad, Old Potsdam-Parishville Road. This was once the old Peter Gilbert Farm which sits on the divide between the Raquette and St. Regis river basins. Later, it was owned and operated by Frank Hinman. In 1936, the Fountain Brothers, Lyle and Bert, purchased it and operated a large dairy farm, but as they got older, they sold everything and just lived on the farm, retired. After their deaths, the widow Eva Fountain sold the farm to Francis Conrad, but he never farmed.*





*This barn is owned by Conrad Cook, Old Potsdam-Parishville Road. The farm was settled by the Crane family. Later, in 1916, Reubin Hill bought the property where he had a holstein dairy. After he retired, he sold the property to Conrad Cook who still operates the farm land but no cattle are kept in this barn. He has recently applied for a grant to repair the barn.*

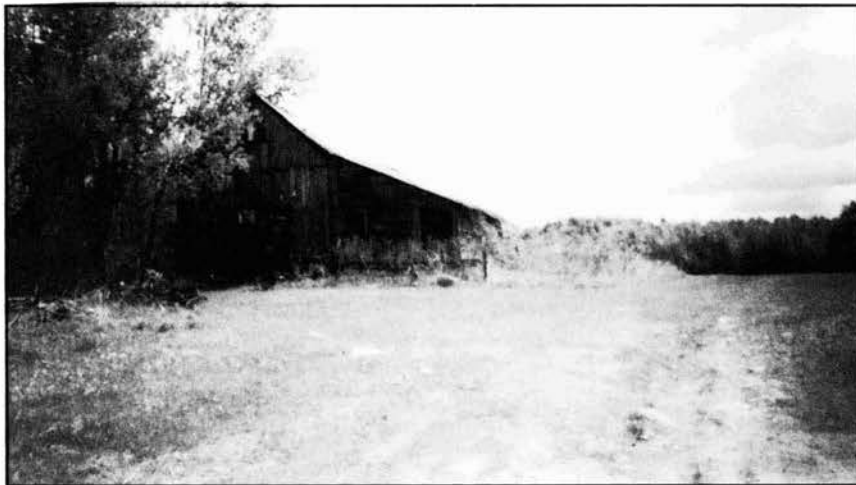


*This barn is owned by Don and Nancy Smith, Old Potsdam-Parishville Road. The farm was once owned by Don's parents, Clifton and Lillian Smith. They are both dead, and the original buildings are gone. Don and Nancy recently built a small barn, and have a few head of cattle.*



*This barn is owned by Jerry Sullivan, Old Potsdam-Parishville Road. Owned originally by J. Parker, then Luther Sayles, Warren Sayles and William Rabideau. The farm is currently in operation.*

*This farm is owned by Roger Parker, Parker Road. It was called the Delong Farm and through the years has had many owners. The farm is no longer in operation and the barns are in very bad condition. Randy Farns lives in the house.*



*This barn is owned by Sheila Parmeter, Parmeter Road. This farm was settled by J. Johnson, and later owned by Daniel Mosher, his son-in-law. Edwin Parmeter bought the farm from the Mosher family and it was passed down to Thomas and Sheila Parmeter. Thomas died several years ago and the farm is no longer in operation.*

*This barn is owned by Arnold Emlin, Pickettville Road. In 1865, C. Newell owned the farm. Later it was passed down to a relative in the Simonds family. Later, William Bump owned it and passed it down to his daughter and her husband, Stella and Harry Emlin. It belongs to their son. The barn has not been in use for a very long time.*





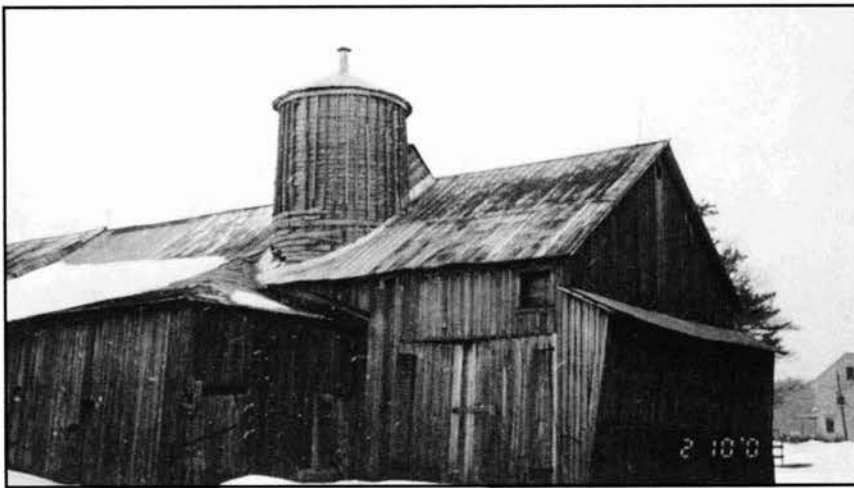
*This barn is owned by John Parmeter, Pumpkin Hill Road. Louis Howard and his wife owned this farm and Edwin Parmeter, a distant relative, bought the farm from them. Later, his son and wife lived there and now it is owned by his grandson. The farm is vacant and the barn is in poor condition, not having been in operation for years.*

*These barns are owned by Romie Clothier, Pumpkin Hill Road. This was the old Keener Farm. The barns have not been used in years.*



*This barn is owned by Evelyn Randall, Pumpkin Hill Road. It was once owned by Oscar Stone, before Evelyn's husband, Gordon Randall, operated a farm there. It has not been in operation for years.*

*This farm belongs to Nelson Gilbert, Pumpkin Hill Road. It was been in the Gilbert family for three generations. First Isaac and his wife, then Walter and Gloria and now Nelson and Diane. The barn has not been used for cattle or horses for years.*

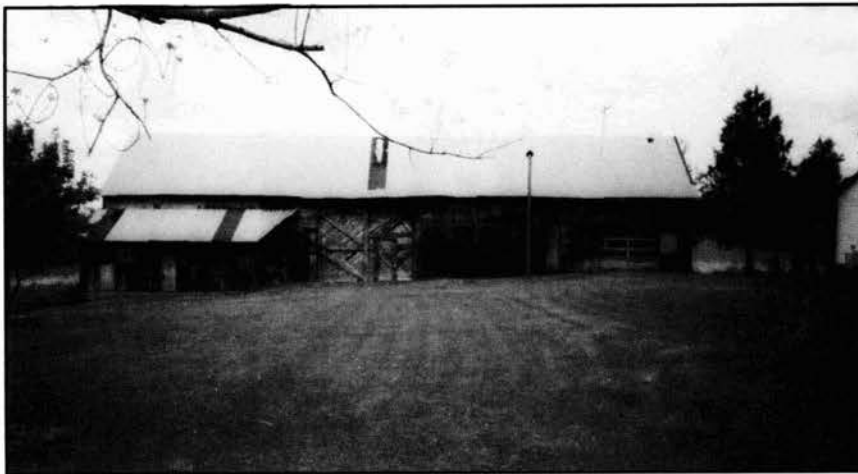


*This barn is owned by the Ralph Christy Estate, Rodwell Mill Road. Owned by D. Perkins, then passed down to relatives, Delmar Christy, Clarence and Harlow Christy and then Ralph Christy. The farm is not in operation, but is for sale.*

*This barn is owned by Christopher McGee and Bonnie McCauley, Rodwell Mill Road. Formerly the Lavine Farm, there is now no activity.*





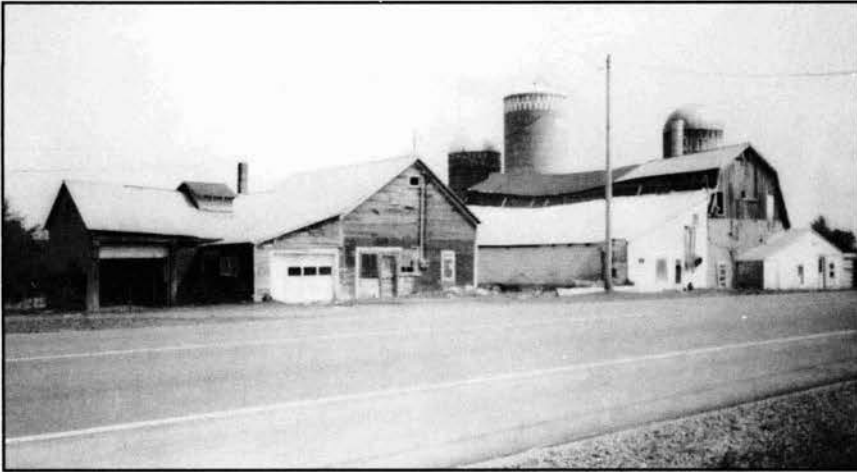


*This barn is owned by Esther Foster, Russell Turnpike Road. Esther's husband, Ted Foster, and Raymond Charleson, his son-in-law, built the barn in the 1950s. It has not been used for years.*

*These barns are owned by David Stone, State Highway 11B. They were built by Elijah Converse sometime around 1849. The farm was handed down to his son, Horace, and later to his grandson, Era Converse. It was sold to Lawrence Phippen, who was a distant relative. Kenneth Parker bought and operated the farm for many years, but it currently stands idle.*



*This barn is owned by David Gilbo, Corner of State Highway 11B and the Conner Road. A man named Connor operated the farm. It had been vacant many years as the house had burned. Now, there is a trailer on the property, but the farm is not in operation.*



*These barns are owned by Cerismi Lumber Co, in Vermont (Tim Hanson, Mgr., Malone, NY), on State Highway 11B. It was owned by Mark Regan, and later by his son, Robert Regan and wife. It is no longer being operated*



*This barn is owned by John Sullivan, State Highway 11B. This was the old Campbell Farm, but John and Corliss Mittelstaedt owned it later, and during the 1960s, John built the barn. It was once used as a horse barn, but has not been used for years.*





*This barn is owned by Paul Kellam, State Highway 11B. First owned by Aaron Lee, then passed down to a daughter Ethel who married Ernest Kellam. It then passed down to their son, Paul. It has always been in the family but has not been operated as a farm for many years. The house is rented to Irene Sullivan.*

*This barn is owned by Jack Kelley, State Highway 11B. The Samuel Eastman Farm, later James Eastman inherited. Yet later, Frank Eastman, James' son, lived there until the end of his life, then J.J. Burke and sons purchased it. After their deaths, it was purchased by Hilda Tailon and she sold it to Jack Kelley. It has not been operated as a farm in a long time.*



*These barns are owned by Pamela Collins Smith, State Highway 11B. Once owned by Cecil Collins; his sisters, Mrs. James Cotter, Ida Collins and Lillian Collins lived with him. He worked this farm plus the farm owned by his brother Chapin Collins. Cecil passed away and Ida and Lillian lived there for years, until they died. After their deaths, their niece and her husband took the place over and lived there for several years, until the house was destroyed by a fire that also killed Mr. Smith. The barns are still there but in very poor condition*

*This barn is owned by Peter and Vicki Murphy Wimmer, State Highway 72. This barn was built around 1994 for horses. They do not presently have horses.*



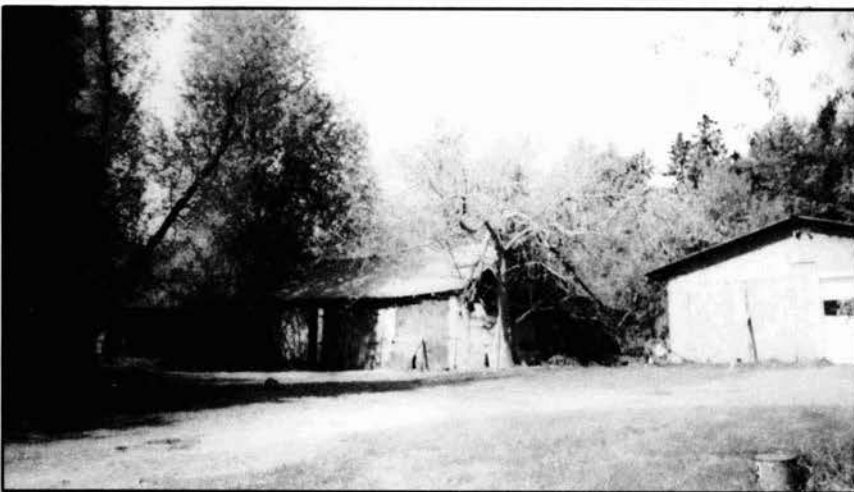
*This farm is owned by Conrad Cook, State Highway 72. Perhaps Elvin Bloss was the first owner. After that, several people owned or lived there. Scott Cook owned it before his son, Conrad. Conrad and wife have about 120 head of cattle and the land worked is about 910 acres.*





*These barns are owned by Conrad Cook, State Highway 72. These barns were located on the farm once owned by Allen Shaw, Edgar Snell and Henry Tyo, along with others. The barns are currently unused.*

*This barn is owned by Sean Smith, State Highway 72. Formerly the Wesleyan Methodist Church, it was moved from its location to the Jeremiah Trumble home. It was used as a regular barn on the farm. Later, it was passed down to Henry Trumble. Everett Frederick, a relative, owned it. Daniel Manor bought it from Mrs. Frederick. Sean Smith bought it from Manor. It was not used for years, but now the Smiths have horses. In 1987, they replaced the floor and a new door and fixed the windows and roof.*



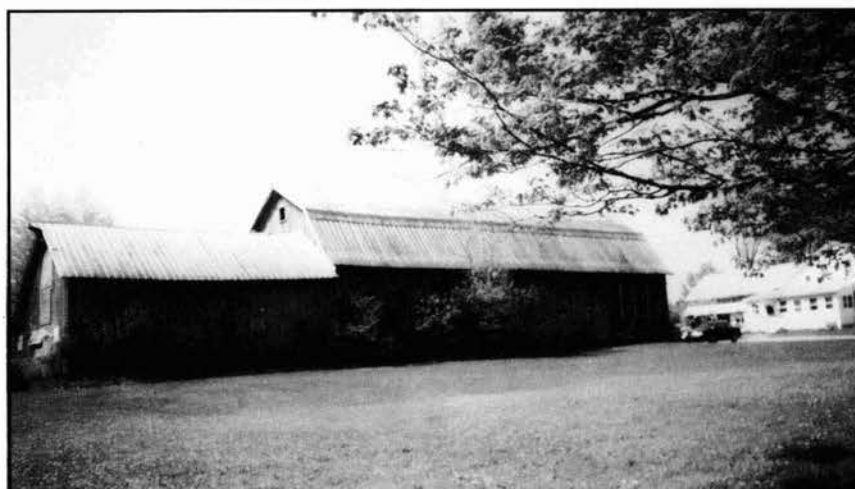
*These barns are owned by Russell Crump, State Highway 72. Russell's father, Francis, built the barn in 1971 and he had a few cows at that time. His wife, Barbara, used to make cottage cheese and sold it locally. The barn hasn't been used in years, and both Francis and his wife have passed away.*

*This barn is owned by David Kyle, State Highway 72. Former owners include Levi Fuller, R.. Haywood and Jerry McCarthy. Part of the barn has fallen down; this is what is left. It has not been in use for years.*



*This barn is owned by Ernest Scovil, State Highway 72. Allen Shaw owned this small farm. It was also once owned by Edison Martin. It is not believed to house cattle at this time.*

*This barn is owned by Robert Meashaw, State Highway 72. This building was built in 1831 by Porter Parkhurst, and later owned by John Parker, Byron Parker and then Glenn and Rosabel Parker Meashaw. Their son still owns the farm, but it is no longer in operation.*

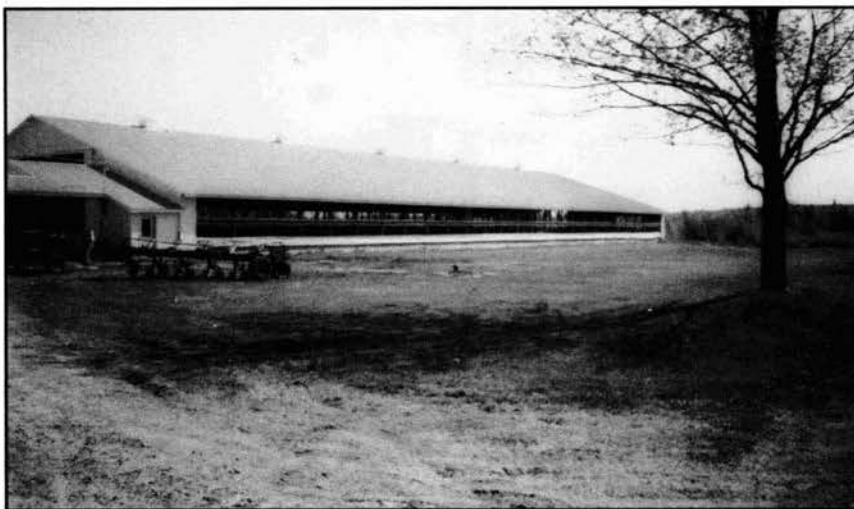




*This farm is owned by Snell Farms, (Joseph, Richard and Steven Snell), State Highway 72. They have about 265 head of cattle, and work somewhere around 1525 acres of land (including the 1000 acres they own). First owned by Allen Whipple, later by Allen Wheeler and Vincent Snell. The first barn located there was probably built ca.1830 or 1840 by Allen Whipple. The first addition was completed in 1919. The milking parlor is now located in this area and the rest of the barn is used for housing dry cows.*



*Also on the Snell Farm, the middle barn was built in 1971 for the purpose of a holding area; it was also for calves and heifers.*



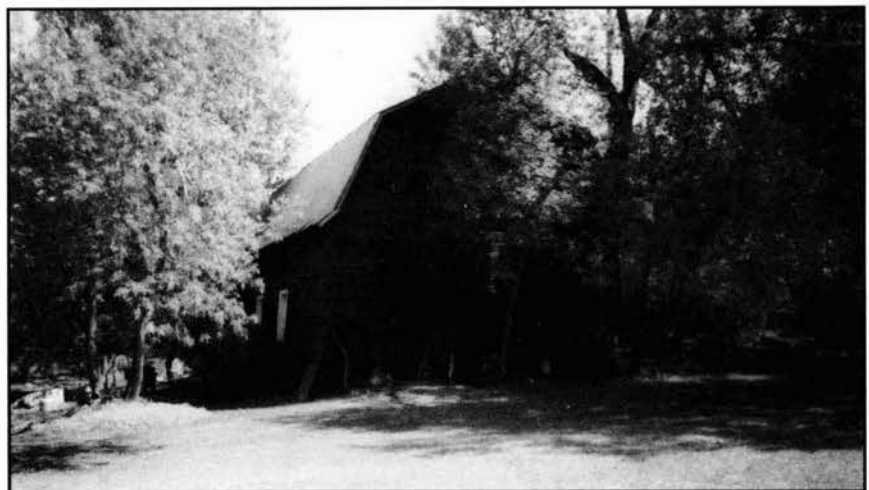
*This barn is the newest edition to Snell Farms, having been built in 1998. The milking cows are kept there.*

*This barn is owned by Harold Exware, State Highway 72. The farm was once owned and operated by Patrick Carline, but is no longer in operation.*

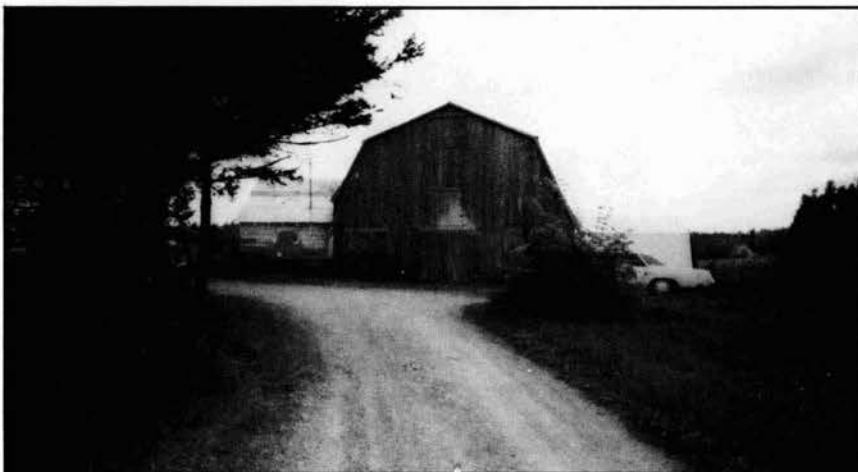


*This barn is owned by Donald King, State Highway 72. This farm has always been in the Champney family, having passed down through the years by generation. After Ella Champney Hoxie died, her estate sold it to Don King. He has horses and uses the barn.*

*This barn is owned by Karl Thaller, State Highway 72. Originally the Gates Farm, this barn has not been used for years.*







*This barn is owned by Lyndon Gilbert, West Parishville Road. The Anstead Farm, later known as the Gilbert Farm; it is still in operation.*



*This barn is owned by ADON Farm (Donald and Adriene Gilbert), State Highway 72. This farm was owned by the Hancock family and also Bernard Taylor. The barn has not been used since Mr. Taylor owned it. Andrew Gilbert and family occupy the house. The farm is operated by Andrew and Anthony Gilbert.*



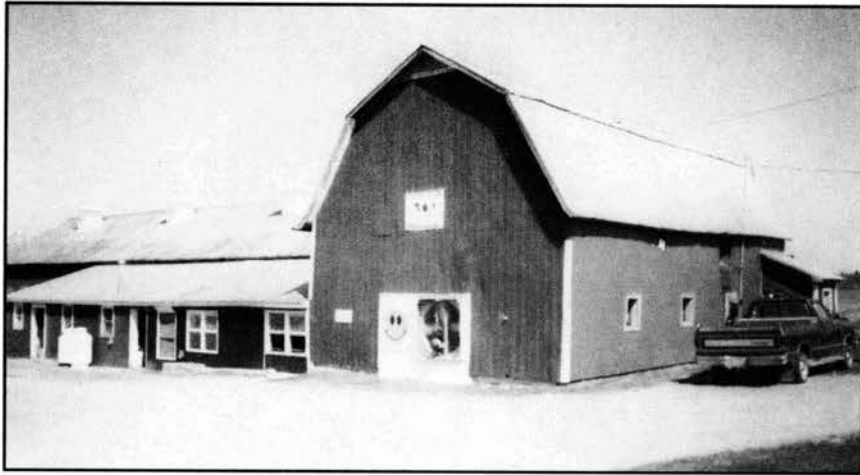


*These barns are owned by ADON Farms (Donald and Adrienne Gilbert) and operated by Andrew and Anthony Gilbert, State Highway 72. The farm once belonged to the Riggs family, and later Roy and Fay Grant. The original barns are now gone. A Shell Corn Storage Barn now stands behind the house. Anthony and Ann Gilbert occupy the house.*



*The Gilberts have about 600 cattle and work about 2000 acres of land. To the right is the calfbarn, built in 1999.*





*ADON Farms (Contd.) To the left is an older barn (milking parlor and holding area) with 1937 addition for older calves.*



*Dry barn for heifers and dry cows, built in 1996.*



*Barn in back of the house for milking cows, built in 1984.*

*This barn is owned by William Weems, West Parishville Road. It was once the B. Jefferson Farm, and later owned by Albert Weems, William's father. It was a dairy farm with horses, but is now used only for storage.*



*This barn is owned by Belinda Martin Bloom, White Hill Road. Rutherford Sampier once owned and operated the farm; later his daughter and her husband (Lyle and Oleva Hart) owned it but never operated the farm. Later, their son Robert and his wife owned it and sold it to Mrs. Bloom. It has not been in operation for years.*

*This barn is owned by Steven Dean, White Hill Road. The barn was remodeled by Steven's uncle, Elwood Taylor. His father, Duel Taylor, bought the farm around the early 1900s. There is now no activity.*





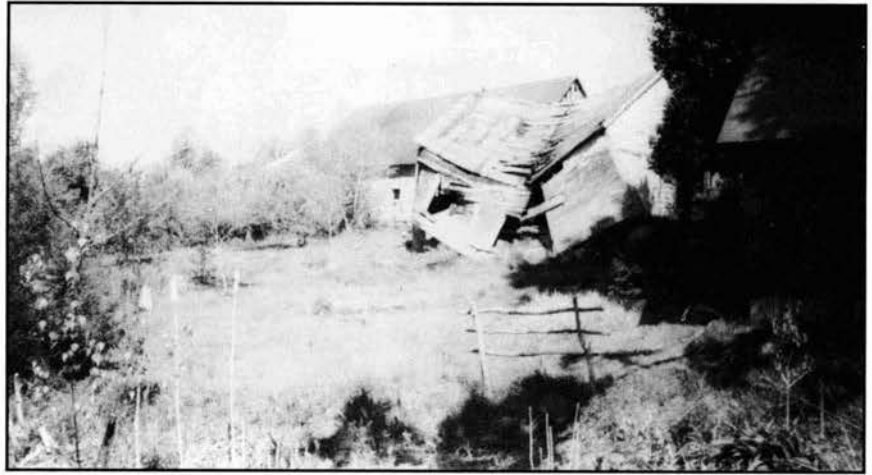
*This barn is owned by Thomas Demo, White Hill Road. Owned originally by Frank Cary, and later by his son, Leland, and now Thomas Demo, who is Leland's grandson. There are no cattle or horses housed here.*



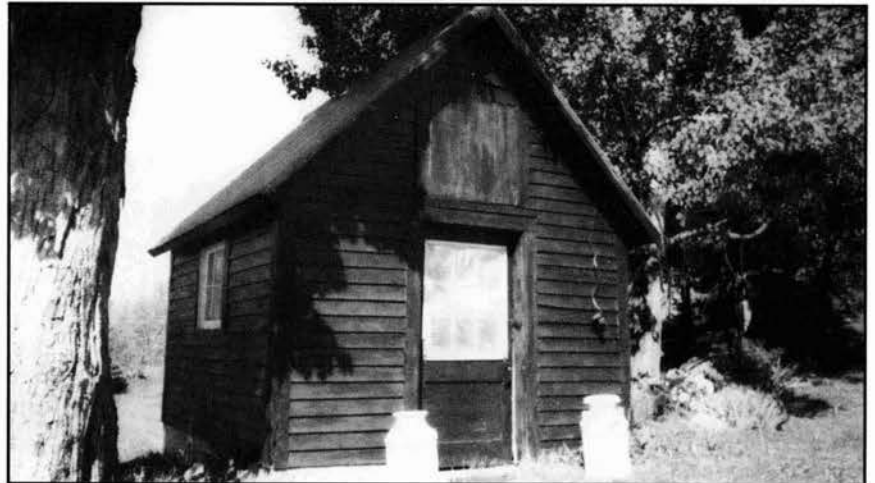
*These barns belong to Ray and Deb Orland, Wildwood Road. It was the original Root Farm. Once also operated by the Gotham family, it is not now being operated as a farm. Only hens and roosters are currently raised there.*



*Another view of the Orland barn.*



*A little milk house on the Orland property, which I thought unique.*



*This barn is owned by Jean Farr, Woodruff Road. It was built by Edwin Farr, her husband, to house horses. Although it is not an old barn, there are no horses currently housed.*

## THE OLIVER LAW FIRM

Cathleen E. O'Horo  
Roger B. Linden  
Francis P. Cappello

Michelle H. Ladouceur, Associate

117 Main Street  
Canton, NY 13617

Tel.: 315-386-4595 Fax: 315-379-1240

## St. Lawrence County Historical Association Hours

SLCHA Office, SLCHA Archives  
& Silas Wright House

Open Tuesday - Saturday, Noon - 4:00 p.m.  
Friday Noon - 8 p.m.  
(and by Appointment)  
Admission Fees:

Museum	Free
Archives	Members - Free
	Students - \$2.50
	General Public - \$5.00

Fax: 265-9222



Cell: 322-3520

Toll Free: 1-800-371-9286

Serving the North Country Since 1979

[www.walshauction.com](http://www.walshauction.com)

## Northern Lights Bookshop

Quality Used Books  
Specializing in non-fiction,  
regional books

We buy private libraries & collections

95 Irish Settlement Rd. Pierrepont NY  
shop open Thurs. - Sat., Noon - 5 pm  
315-379-9564  
email: [nlb@northnet.org](mailto:nlb@northnet.org)

**1802 - 2002**

***Celebrate  
St. Lawrence County's  
Bicentennial at the  
St. Lawrence County  
Historical Association***

**1802 - 2002**

Return Service Requested  
PO Box 8  
Canton, NY 13617

Bulk Rate  
U.S. Postage  
Paid  
Permit No. 21  
Canton, NY 13617

Non-Profit Organization

To learn more, visit us at [www.NorthCountrySavings.com](http://www.NorthCountrySavings.com) and click on **Mortgages**

**NO Credit Report Fee**  
**NO Application Fee**  
**NO Attorney Fee**  
**NO Title Insurance Fee**  
**NO Origination Fee**  
**NO "Doc Prep" Fee**  
**NO Mortgage Tax**



"When you're buying a home, every dollar counts. If you've been searching for a mortgage you can live with, take a closer look at North Country Savings Bank. We'll tell you all about

our No Closing Cost Mortgage and how, with as little as 5% down, you can find yourself in a new home. Drop in to a North Country Savings Bank near you. And take a closer look."

*Suzie Ouimet*  
LOAN ORIGINATOR  
ph 315.769.8459

# NO CLOSING COST Mortgage

## Take a closer look

Offices in  
Ogdensburg • Canton  
• Potsdam • Massena

**Caroline & Greene, Ogdensburg**  
ph 315.393.1600  
127 Main Street, Canton  
ph 315.386.4533  
31 Main Street, Potsdam  
ph 315.265.2300  
22 Phillips Street, Massena  
ph 315.769.3566

**NORTH COUNTRY SAVINGS BANK**

*The Home of Home Mortgages*



Covered expenses are limited to credit report fee, application fee, flood zone determination fee, recording of deed and mortgage document, mortgage tax, designated bank attorney fee (borrower selected attorney for personal representation not included), abstract update fee (creation of an abstract of title not included), Appraisal fee charged at time of application and refunded to borrower at time of closing. Any fees customarily paid by the seller are excluded from coverage under this program (ex: survey). Borrower may be required to reimburse the bank for the above expenses in the event the loan is discharged or paid in full during the first three years of the loan term.